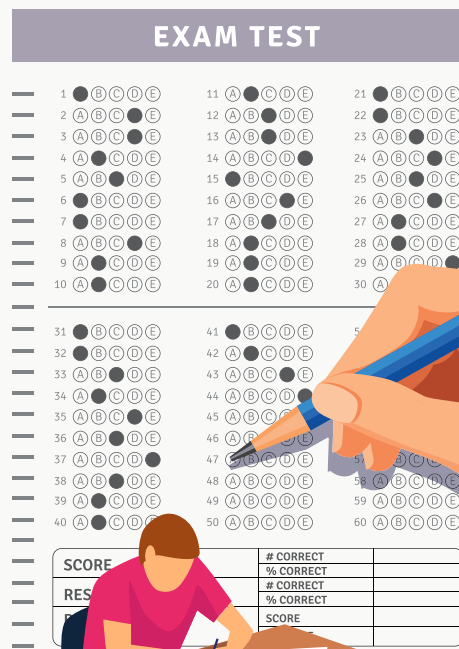
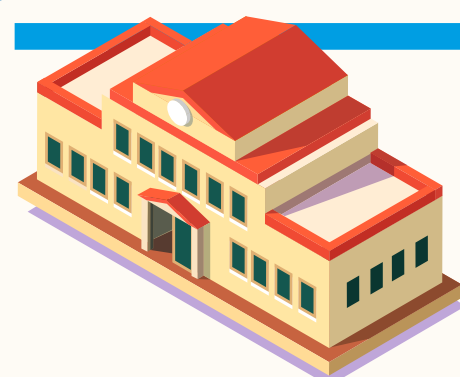
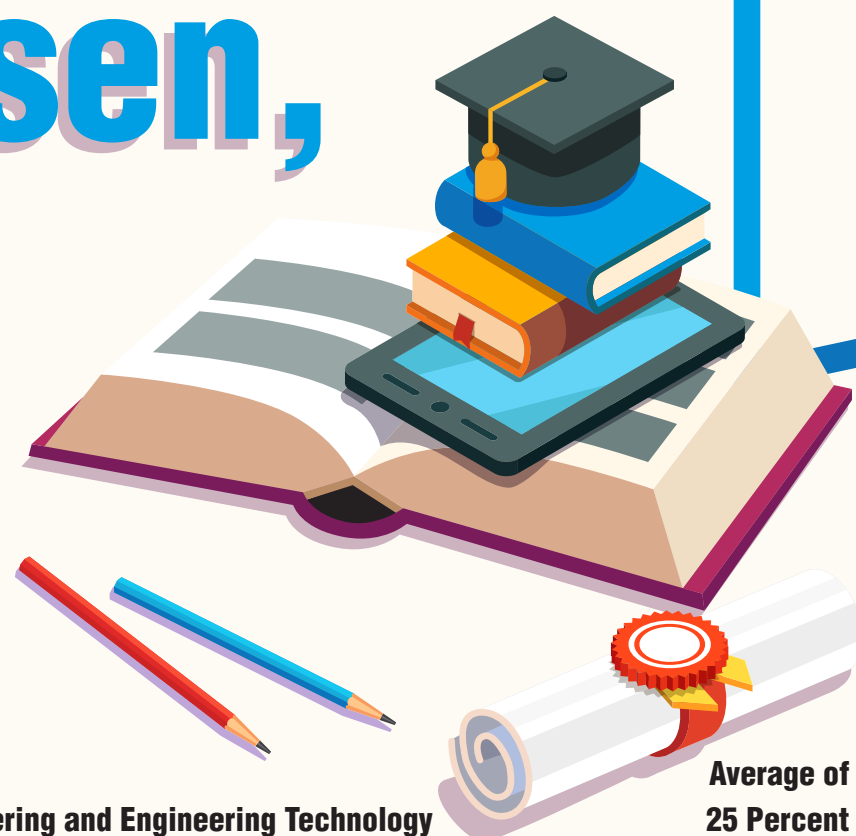
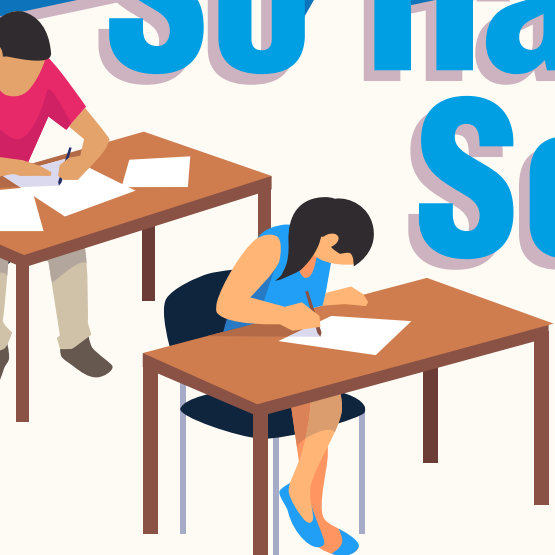
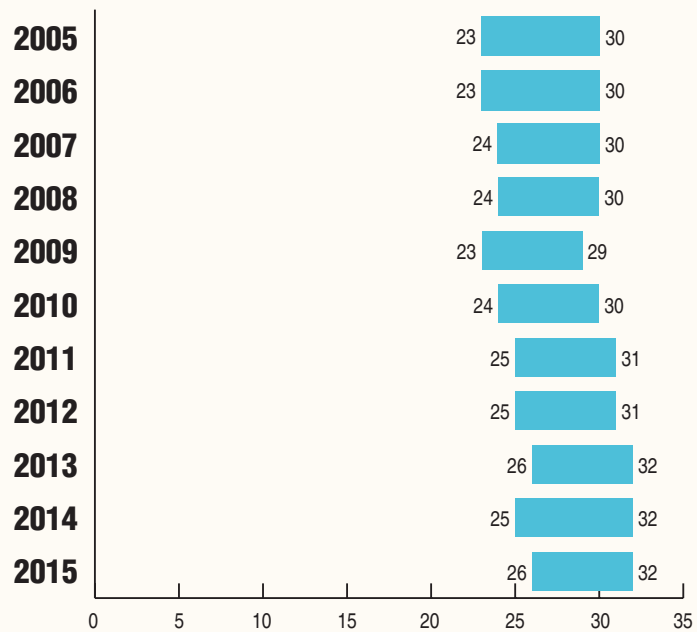


# As Enrollment Has Risen, So Have Scores

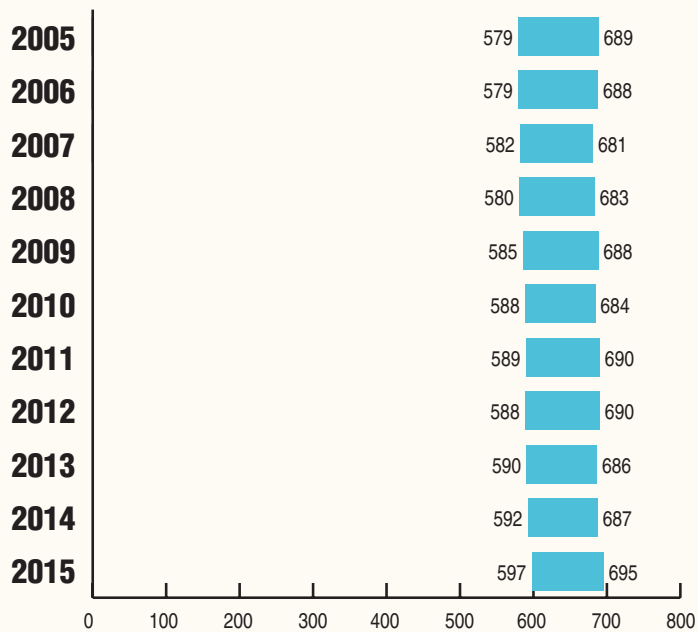
Engineering schools have attracted a growing number of applicants over the past decade, but they have also accepted more students. With the increase in enrollment, an obvious question arises: Are today's students as qualified as those in the past? It turns out they're slightly better prepared, at least based on math scores. ACT math scores for incoming freshmen in 2005 ranged from 23 to 30. Ten years later, they ranged from 26 to 32. A similar increase is seen in SAT scores. The percentage of students who were in the top quartile of their senior class has also gone up, from 37 percent in 2005 to 40 percent in 2015. However, that percentage has slipped since 2010, the peak year for top-quartile students.



Engineering and Engineering Technology  
ACT Math High and Low Scores, 2005-2015



Engineering and Engineering Technology  
SAT Math High and Low Scores, 2005-2015



Average of Percent of Entering Freshman in Top  
25 Percent of their Engineering and Engineering  
Technology Undergraduate Class

