

Growing Majors in Engineering

These graphics show how engineering undergraduate enrollment expanded overall and by discipline from 2003, when ASEE began collecting data on the disciplines listed, to 2017.

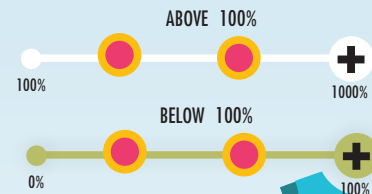
Bachelor's Degrees Awarded in 2017

Bachelor's Degrees Awarded in 2003

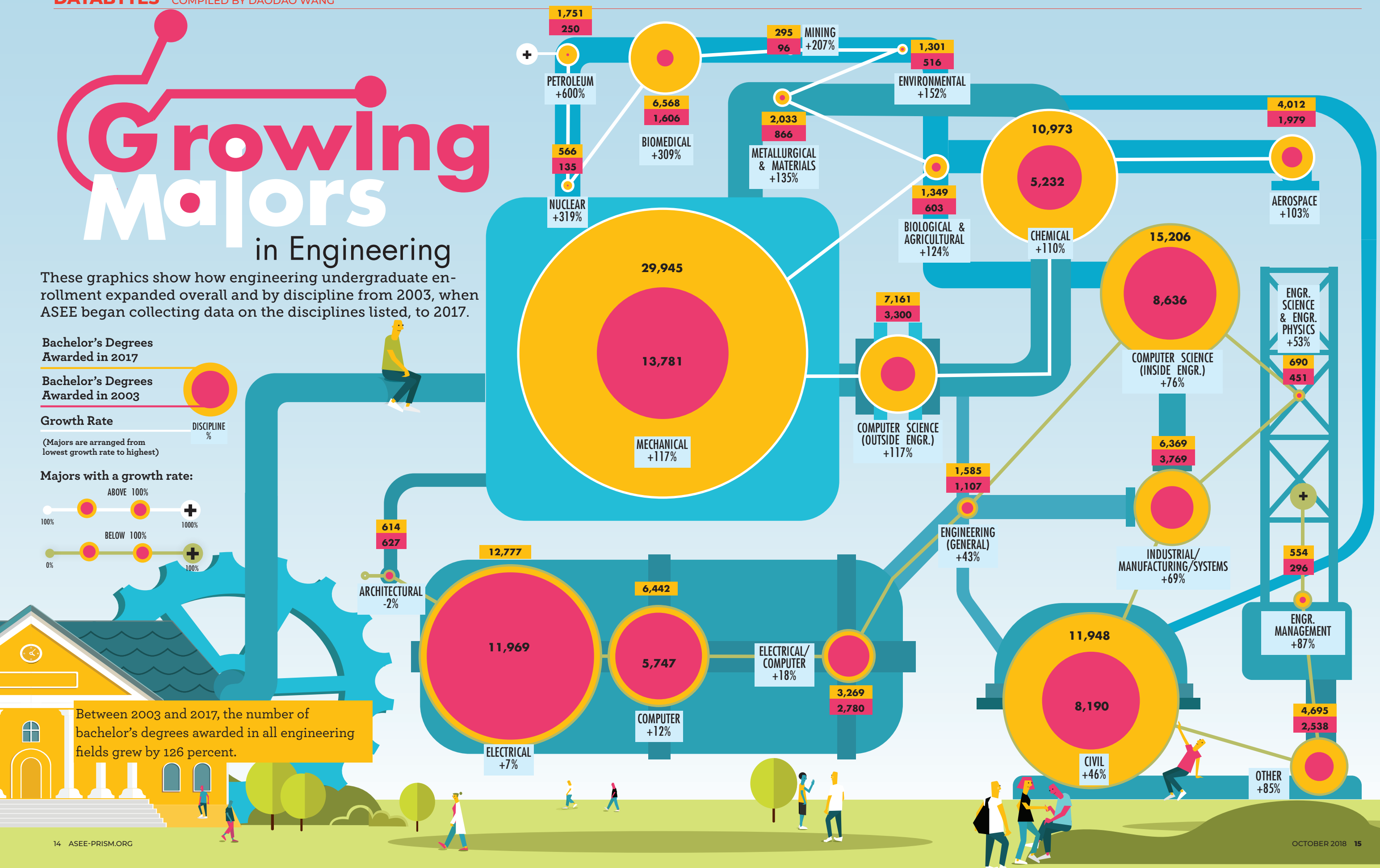
Growth Rate

(Majors are arranged from lowest growth rate to highest)

Majors with a growth rate:



DISCIPLINE %



Between 2003 and 2017, the number of bachelor's degrees awarded in all engineering fields grew by 126 percent.